

Supporting Students with Special Educational Needs: S.H. Ho College's Experiences

Gloria Tsoi

College Development Officer, S.H. Ho College

6 March 2015



善衡書院
S.H. HO COLLEGE

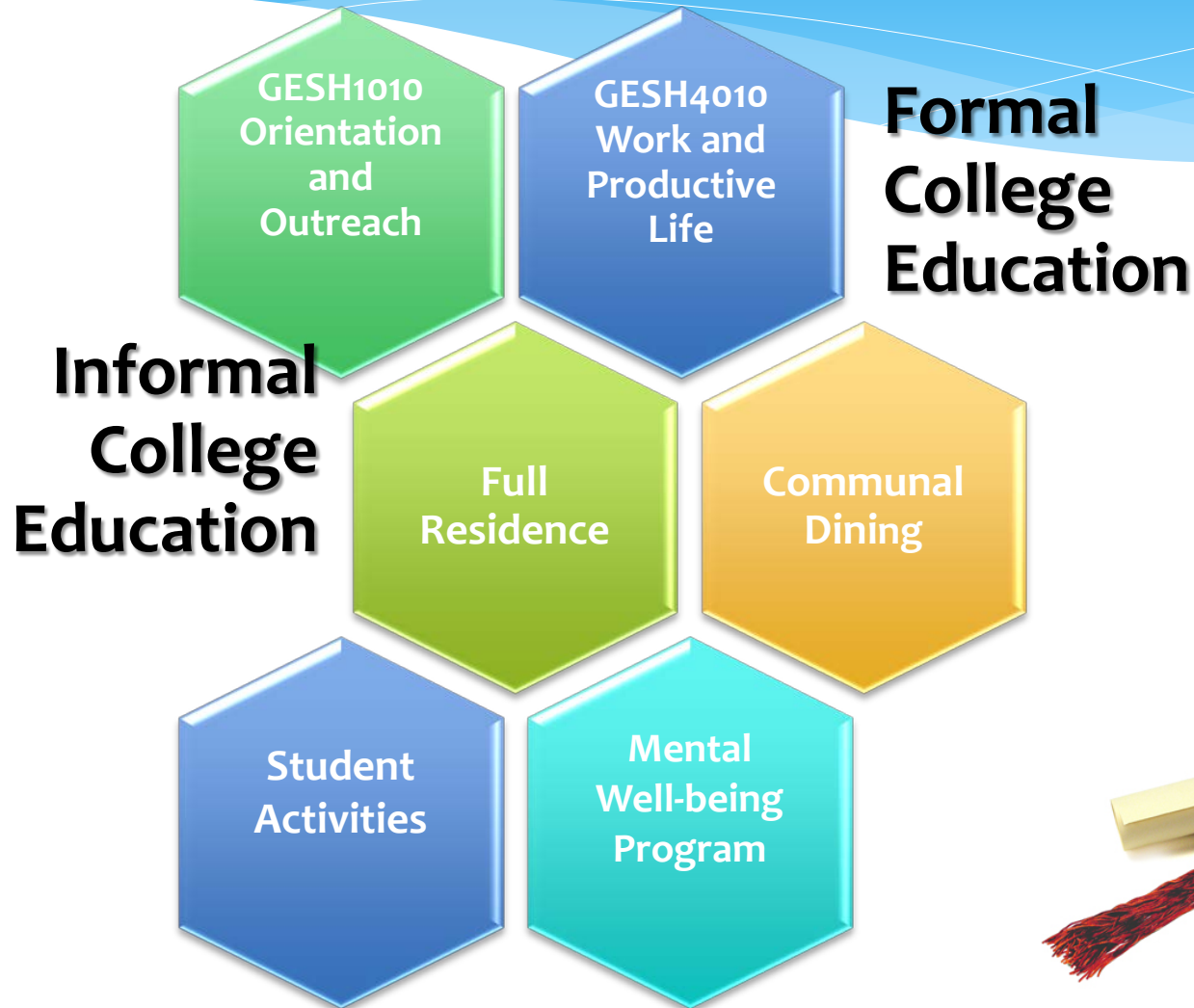
Positive learning environment for SEN Students at SHHO

* STUDENTS WITH SPECIAL EDUCATIONAL NEEDS (SEN)

- * Hearing impairment
- * Mental & physical disabilities
- * Learning difficulties
- * Need extra support for their studies



College Lift at SHHO



Holistic approach for SEN Students

- * Campus Tour before Admissions
- * Orientation before Move-in plan
- * College Life at SHHO
 1. Full Residence
 2. Communal Dining
 3. College General Education
 4. College Activities



香港新界沙田 香港中文大學

善衡書院陳震夏館

—— 駕車路線

- - - 中大校巴路線 (首站)

- - - 中大校巴路線 (尾站)



善衡書院
S.H. HO COLLEGE

Campus Tour before Admissions

- * **S.H. HO COLLEGE CAMPUS TOUR (STUDENT & FAMILY)**
- * Chan Chun Ha Hall
- * Ho Tim Hall & Lee Quo Wei Hall
- * Ho Sin Hang Hall (Dining Hall)
- * Dean of Students' Office
- * Like Reading Room
- * Routes to other parts of the College campus
- * Routes to other parts of the University campus



Campus Facilities for SEN Students



Ramps at hostel



Tactile paths on campus



Campus Facilities for SEN Students



Shower room & toilets



Emergency call bells in bedroom and toilets



Orientation before Move-in plan

- * **S.H. HO COLLEGE ORIENTATION (STUDENT & FAMILY)**
- * Meeting with Deans of Students and Wardens
- * College visit to identify the special needs of College Life
- * Provision of a suitable hostel place for the SEN students/and the carers
- * Modification of facilities to fit students' individual needs
- * Co-ordination with Office of Student Affairs and academic departments
- * College Counselling service to the SEN students



Campus Facilities for SEN Students



Sliding door at bedroom (Open)



Sliding door at bedroom (Closed)



Full Residence for SEN students

PARTICULAR RESIDENT TUTORS ARE ASSIGNED BY WARDENS TO TAKE CARE OF SEN STUDENTS

- * Being as a contact person for any emergency cases during non-office hours
- * Being as a peer to facilitate their adaptation to hostel life



Communal Dining for SEN Students

- **HIGH TABLE DINNER**

- * Wardens are assigned to sit with SEN students

- **COMMUNAL DINING**

- * On-duty and on-site resident tutors will act as a contact person for any emergency cases



College General Education

* **GESH1010 ORIENTATION AND OUTREACH**

- * Experiential learning course
- * Adventure camp
- * Course journal submission
- * Different formats of production
- * e.g. Models & Board games, etc.

Induction Course – GESH1010 Orientation and Outreach



College General Education for SEN Students

* GESH1010 ORIENTATION AND OUTREACH

	General students	SEN students
In-class activities	Group discussions and drawing	Group discussions and oral presentations



College General Education for SEN Students

* GESH1010 ORIENTATION AND OUTREACH

	General students	SEN students
Assignment – Course journal	Writing, drawing in hand-writing	In e-format



善衡書院
S.H. HO COLLEGE




College General Education for SEN Students

* GESH1010 ORIENTATION AND OUTREACH

	General students	SEN students
Assignment – Production	Any formats, i.e. model, board games, video, etc.	Submit an essay or arrange an oral presentation



A photograph of a modern university campus. In the foreground, there are several trees with green foliage. In the background, there are several multi-story buildings with a mix of white and grey facades. To the right, there is a large, dark, abstract sculpture on a pedestal. The sky is blue with some light clouds.

Case Sharing for SEN Students with Mental & Physical disabilities



Tips on communicating with SEN Students

* **Respect**

- * Response
- * Reaction

*Respect means
valuing others.*



Tips on communicating with SEN Students

* Respect

* **Response**

* Reaction



Tips on communicating with SEN Students

- * Respect
- * Response
- * **Reaction**



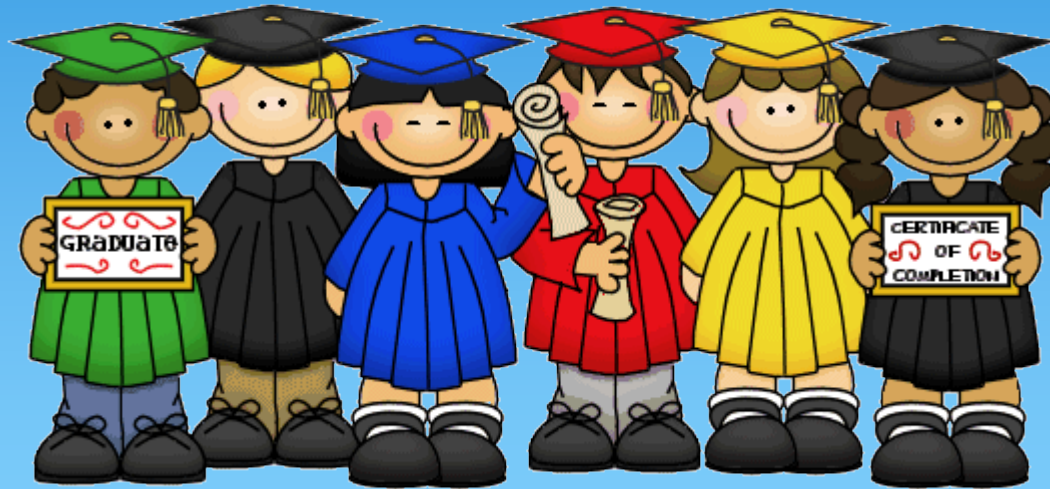
Student D with Mental disabilities



Student H with Physical disabilities



WELCOME!



善衡書院
S.H. HO COLLEGE

THE END